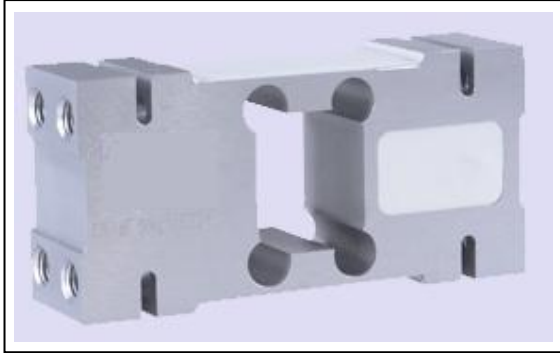


LOAD CELL L1F



Aluminum construction with parallel beam

- Silicon adhesive sealed, surface anodized and anti-corrosion
- Integrated structure and easy installation
- Suitable for pricing scale, platform scale and other electronic weighing devices.

Max. capacities : 50Kg...2000Kg

Max. platform size :

50Kg.....200Kg 600×600mm

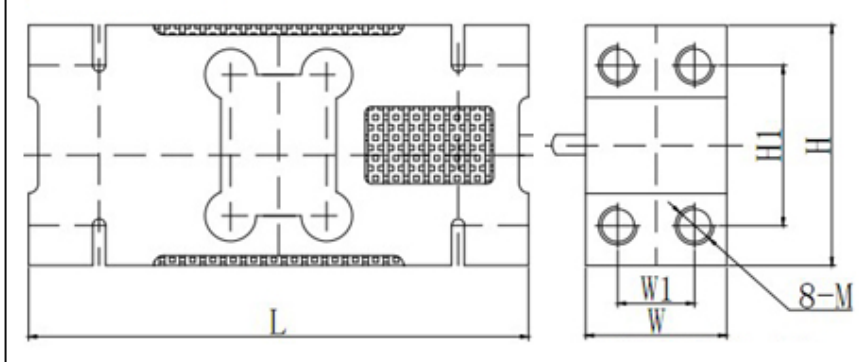
250Kg...500Kg 600×800mm

750Kg..2000Kg 1200×1200mm

Specifications:

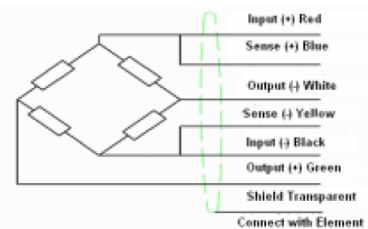
| | | |
|--|----------|--------------------------------------|
| Accuracy Class | | C3 |
| Max. Capacity (E _{max}) | Kg | 50/100/150/200/250/500/750/1000/2000 |
| (V _{min}) Minimum LC verification interval | g | E _{max} /7000 |
| (n _{max}) Maximum number of load cell verification intervals | | 3000 |
| Sensitivity(C _n) | mV/V | 2.0±0.2 |
| Temperature effect on zero balance | %FS/10°C | 0.0200 |
| Temperature effect on sensitivity | 20~40°C | 0.0175 |
| | -10~20°C | 0.0117 |
| Combined error | %FS | 0.0200 |
| Creep (in 30 min) | %FS | 0.0167 |
| Zero balance | %FS | 2 |
| Input resistance (R _{LC}) | Ω | 406±6 |
| Output resistance (R _O) | Ω | 350±3 |
| Insulation resistance(R _{is}) at 100 V _{DC} | MΩ | ≥5000 |
| Service temperature range | °C | -10~+40 |
| Storage temperature range | °C | -20~+50 |
| Reference excitation voltage | V | 5~15 |
| Safe load limit(E _L) | %FS | 150 |
| Breaking load(E _d) | %FS | 300 |
| Max. platform size | mm | 400×450mm |
| Material | | Aluminum |
| Protection class | | IP65 |
| Cable | | 3±0.1m,φ5.8±0.2mm |

Outline dimension mm (inch)



Wiring:

Shielded, 4 conductor cable
 Standard cable length: 2m
 Cable type and cable length for customer's own applications are available on requests.



| (Kg) Rated Load | (mm) Size | | | | | |
|-----------------|-----------|----|-----|----|----|-----|
| | L | W | H | D | P | M |
| 50-200 | 156 | 44 | 75 | 50 | 24 | M12 |
| 250-500 | 146 | 60 | 95 | 70 | 36 | M12 |
| 50-2000 | 176 | 76 | 125 | 95 | 46 | M16 |